

# Workforce Innovation and Opportunity Act of 2014 (WIOA )

---

WIOA legislative and regulatory structure

WIOA combined state plan, statewide region plan, and local plans

Nebraska's one-stop delivery system governance structure

WIOA Title IB adult, dislocated worker, and youth programs

# Presentation overview

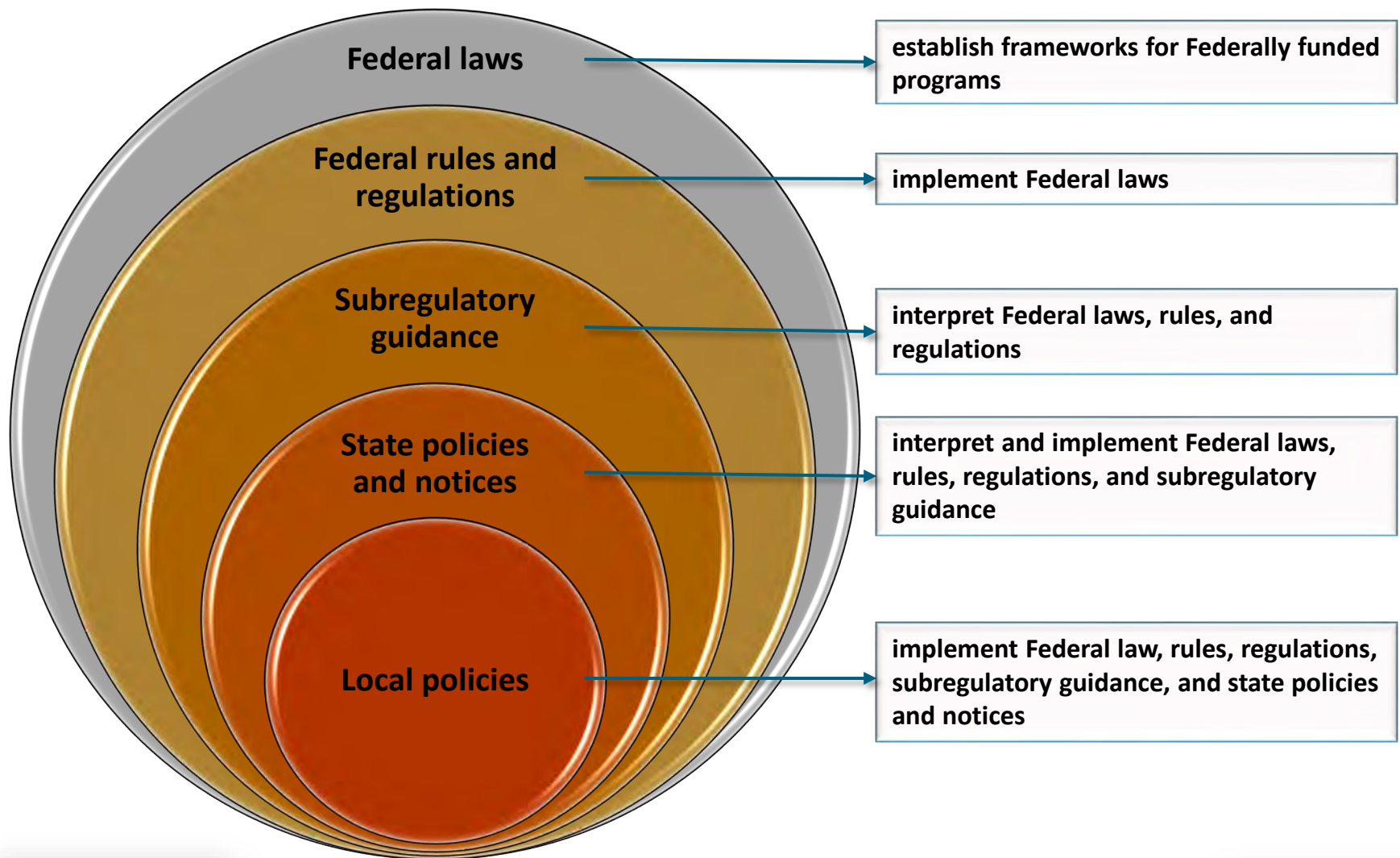
- This presentation provides general information on the following topics
  - WIOA legislative and regulatory structure
  - WIOA combined state plan, statewide region plan, and local plans
  - Nebraska's one-stop delivery system governance structure
  - WIOA Title IB adult, dislocated worker, and youth programs

# WIOA legislative and regulatory structure

---

# WIOA legislative and regulatory structure

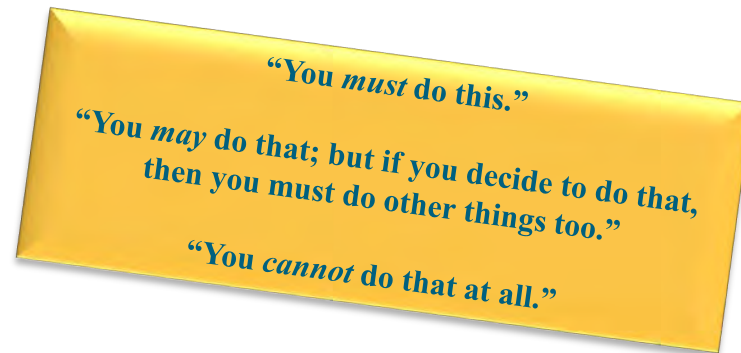
## *How it works*



# WIOA legislative and regulatory structure

## Overview

- WIOA is a Federal law
- Provides framework requirements for state workforce development systems and one-stop delivery systems
- Defines what
  - *must* be done
  - *may* be done
  - *cannot* be done



# WIOA legislative and regulatory structure

*Joint Final Rule: 20 CFR Parts 676, 677, and 678*

- Issued jointly by the US Departments of Education and Labor
- Implements requirements established under WIOA for
  - state plans ([20 CFR Part 676](#))
  - performance accountability ([20 CFR Part 677](#))
  - one-stop delivery systems ([20 CFR Part 678](#))

# WIOA legislative and regulatory structure

*Labor-only Final Rule: 20 CFR Parts 679, 680, 681, 682, and 683*

- Issued by the US Department of Labor
- Implements requirements established under WIOA Titles IA and IB for
  - statewide and local governance of state workforce development systems ([20 CFR Part 679](#))
  - adult and dislocated worker programs ([20 CFR Part 680](#))
  - youth programs ([20 CFR Part 681](#))
  - statewide activities ([20 CFR Part 682](#))
  - administrative activities ([20 CFR Part 683](#))

# WIOA legislative and regulatory structure

## *Other Federal rules*

- Issued by USDOL and other Federal entities
- Provide additional rules for Federally funded programs
- Examples (*not all inclusive*)
  - [2 CFR Part 180](#) – OMB Guidelines to Agencies on Governmentwide Debarment and Suspension (Nonprocurement)
  - [2 CFR Part 200](#) – Uniform Administrative Requirements, Cost Principles, and Audit Requirements for Federal Awards
  - [2 CFR Part 2900](#) – Uniform Administrative Requirements, Cost Principles, and Audit Requirements for Federal Awards [*specific to Federal awards issued by the US Department of Labor*]
  - [20 CFR Part 618](#) – Trade Adjustment Assistance under the Trade Act of 1974, as amended
  - [20 CFR Part 641](#) –Senior Community Service Employment Program
  - [29 CFR Part 38](#) – Implementation of the Nondiscrimination and Equal Opportunity provisions of WIOA



# WIOA legislative and regulatory structure

## *Subregulatory guidance*

- Interprets requirements established under Federal laws, rules, and regulations
- Examples
  - Training and Employment Guidance Letters (TEGLs)
  - Training and Employment Notices (TENs)
  - Unemployment Insurance Program Letters (UIPLs)
  - Veterans' Program Letters (VPLs)
  - Veteran Grant Officer Memorandums (GOMs)
  - State policies and notices
  - Local policies

# WIOA legislative and regulatory structure

## *State policies and notices*

State-level subregulatory guidance issued by the Nebraska Department of Labor (NDOL) that establishes NDOL requirements for WIOA implementation, in accordance with WIOA and its implementing rules, regulations, and subregulatory guidance; and other applicable Federal laws, rules, and regulations

# WIOA legislative and regulatory structure

## *Local policies*

- Subregulatory guidance issued by local workforce development boards that
  - implements requirements established under
    - WIOA and its implementing rules, regulations, and subregulatory guidance
    - other Federal laws, rules, and guidance
    - NDOL policies and notices
  - establishes local-level technical requirements for implementation of
    - local one-stop delivery systems
    - local Title IB adult, dislocated worker, and youth programs

# WIOA legislative and regulatory resources

- Legislative and regulatory resources are accessible at <https://dol.nebraska.gov/ReemploymentServices/Training/WIOA/Resources>
- State policies are accessible at <https://dol.nebraska.gov/ReemploymentServices/Training/WIOA/Policies>
- State notices are accessible at <https://dol.nebraska.gov/ReemploymentServices/Training/WIOA/Notices>

WIOA combined state plan, statewide region plan, and local plans

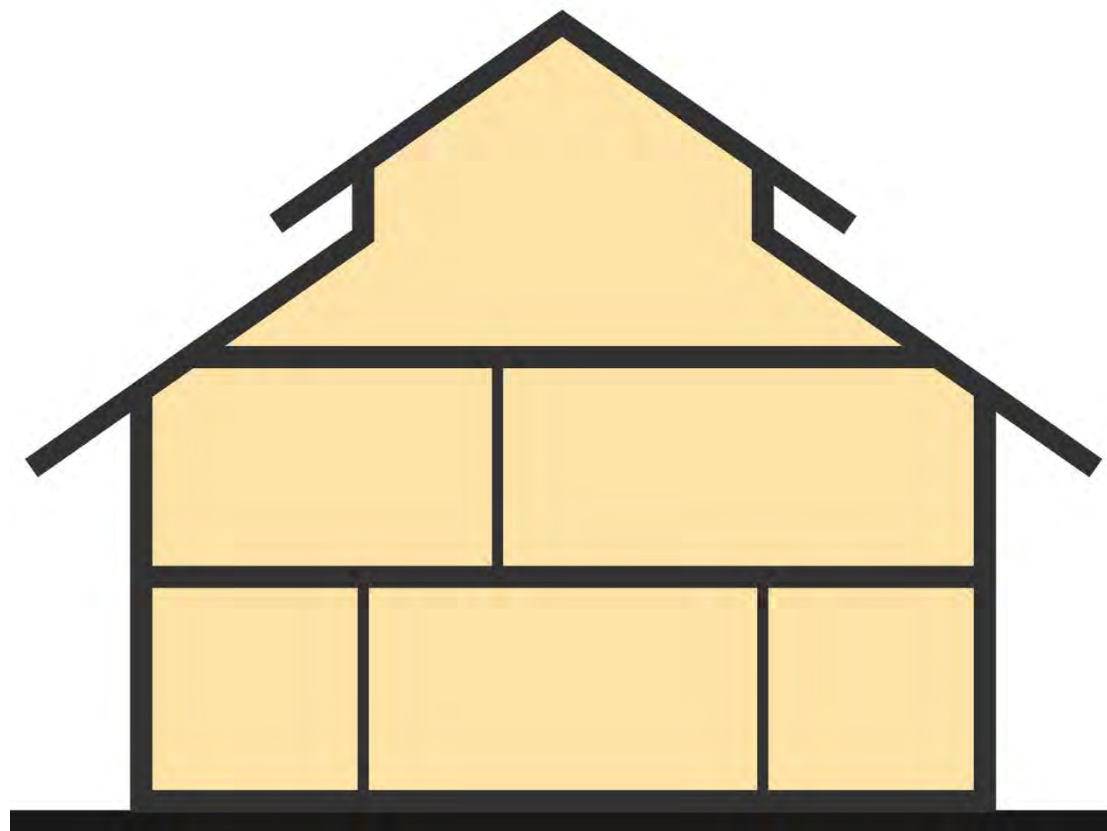
---

# WIOA combined state plan, statewide region plan, and local plans

## *Combined state plan*

Nebraska's  
combined  
state plan  
**builds the house**

↓  
based on WIOA and its  
implementing rules,  
regulations, and  
subregulatory guidance, as  
well as other applicable laws,  
rules, regulations, and  
guidance



© Whilerests | Dreamstime.com | File ID: 55017848 | Royalty Free License – Concept Info, perpetual, worldwide valid, October 30, 2017

# WIOA combined state plan, statewide region plan, and local plans

## *Statewide region plan and local plans*



© Whilerests | Dreamstime.com | File ID: 70381823 | Royalty Free License – Concept Info , perpetual, worldwide valid, October 30, 2017

The statewide region plan and local plans **make the house a home**



based on the framework defined in the combined state plan, WIOA and its implementing rules, regulations, and subregulatory guidance, as well as other applicable laws, rules, regulations, and guidance, and guidance, and NDOL policies and notices

# WIOA combined state plan, statewide region plan, and local plans

*Where are they?*

The current WIOA combined state plan, statewide region plan, and local plans are accessible at:

- <https://dol.nebraska.gov/ReemploymentServices/Training/WIOA/ManualsPlansReports>

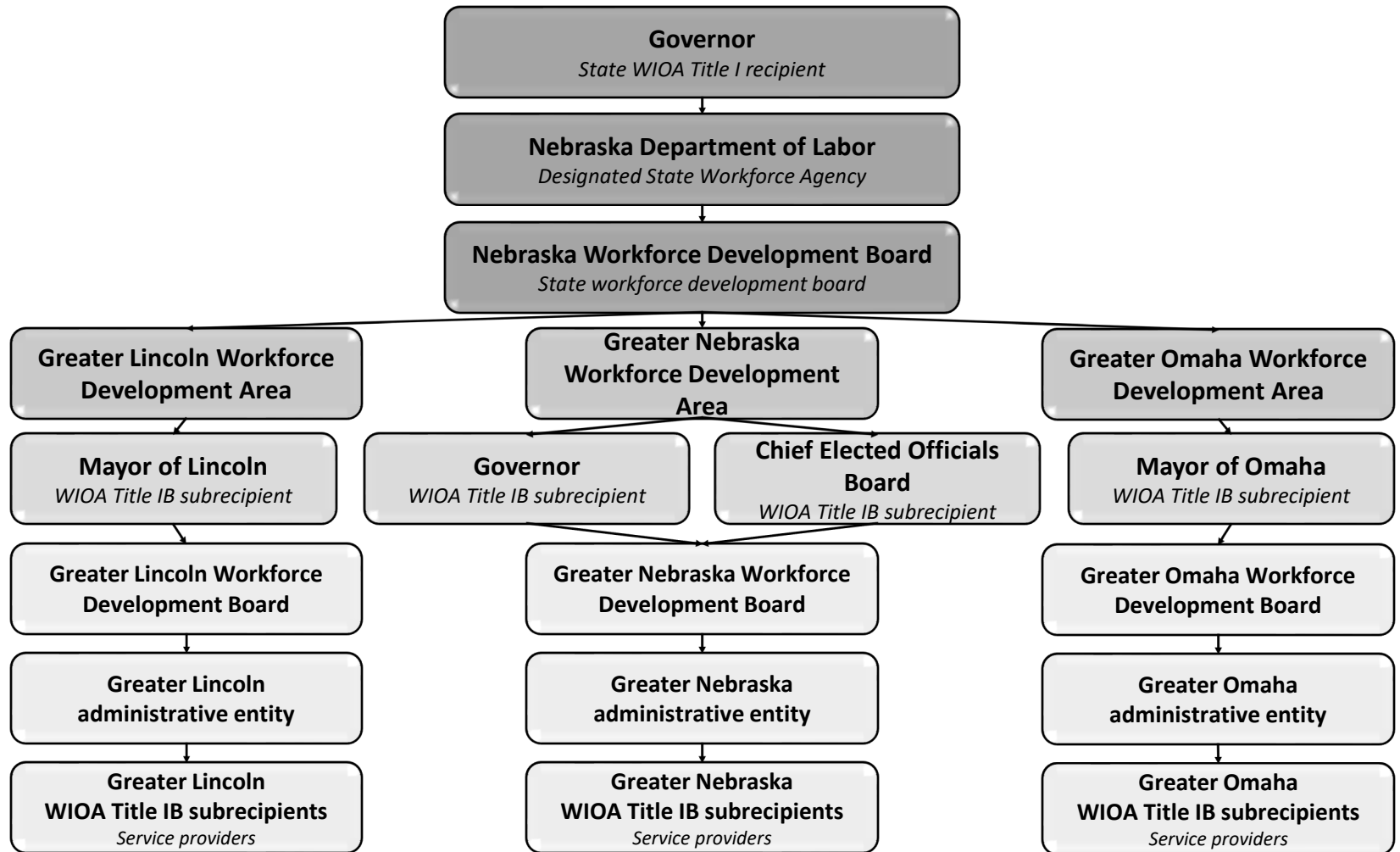


# Nebraska's one-stop delivery system governance structure

---

# Nebraska's one-stop delivery system

## Governance structure



# WIOA Title IB adult, dislocated worker, and youth programs

---

# WIOA Title IB adult, dislocated worker, and youth programs

## *Funding*

- State funding
  - Distributed to the state by the US Department of Labor based on allotment formulas defined under WIOA Title IB
- Local funding
  - Distributed to local workforce development areas by NDOL based on allocation formulas calculated by NDOL's Labor Market Information and Finance Divisions

# WIOA Title IB adult, dislocated worker, and youth programs

## *Program eligibility and priority-of-service requirements*

- Refer to the state policy manual for information on program eligibility and priority-of-service requirements for WIOA Title IB programs
- The state policy manual is accessible at <https://dol.nebraska.gov/ReemploymentServices/Training/WIOA/Policies>

# WIOA Title IB adult, dislocated worker, and youth programs

## *Program services*

- Refer to the state policy manual for information on services provided by WIOA Title IB programs
- The state policy manual is accessible at <https://dol.nebraska.gov/ReemploymentServices/Training/WIOA/Policies>

# Technical Assistance

Requests for technical assistance on information in this presentation may be sent to the WIOA policy mailbox at [ndol.wioa\\_policy@nebraska.gov](mailto:ndol.wioa_policy@nebraska.gov).