



GREATER NEBRASKA

# WORKFORCE DEVELOPMENT BOARD



A proud partner of the [americanjobcenter](#) network

Lisa Wilson  
Chair

Pamela Lancaster  
CEOB Chair

## **Motion to Establish an Executive Committee of the Greater Nebraska Workforce Development Board January 28, 2016 Meeting of the Greater Nebraska Chief Elected Officials Board (CEOB)**

---

### **Greater Nebraska Workforce Development Board Executive Committee, Agenda Item 5A**

Background: Under the Workforce Investment Act, an Executive Committee was designated for the Greater Nebraska Workforce Investment Board to have authority to act on behalf of the full board between scheduled meetings.

It is proposed that an Executive Committee be established under the Workforce Innovation and Opportunity Act for the Greater Nebraska Workforce Development Board. This committee would have authority to act on behalf of the full board between scheduled meetings. The membership of this board would consist of the following board members:

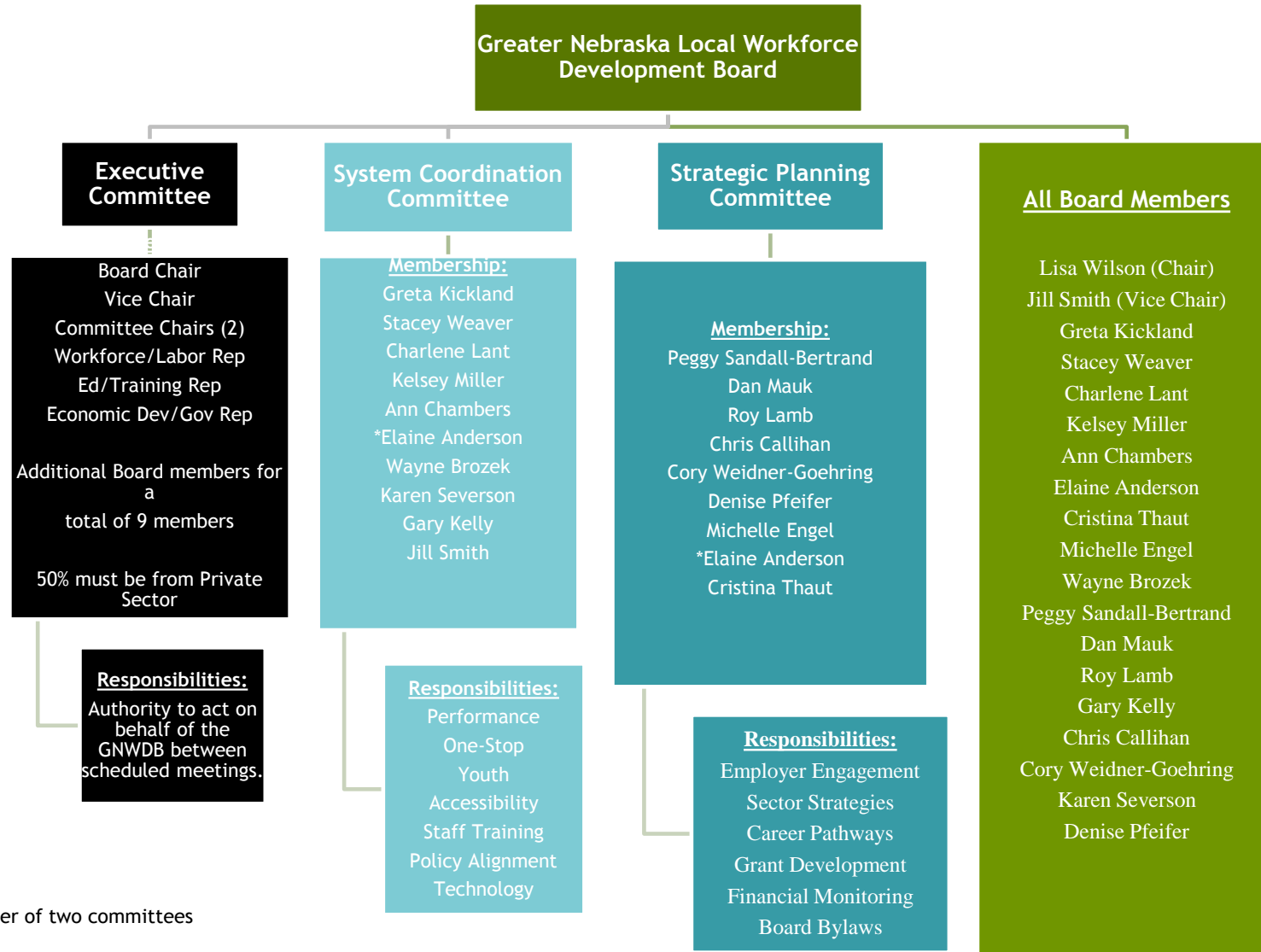
- Board Chair
- Vice Chair
- Committee Chairs (expected to be a total of 2)
- At least one Workforce/Labor Representative
- At least one Economic Development or Government Representative
- Additional board members necessary for a total of 9 total Executive Committee Members

The majority of the Executive Committee Membership must be from the private sector.

---



# GNWDB Standing Committees



\* Member of two committees



## Greater Nebraska Workforce Development Board

Name	Sector	Organization	Location
Lisa Wilson - Chair	Business	Case New Holland Industrial	Grand Island
Jill Smith – Vice Chair	Business	BD Diagnostics	Broken Bow
Dan Mauk	Government, Economic & Community Development	Nebraska City Area Economic Development Corporation	Nebraska City
Charlene Lant	Business	St. Mary’s Hospital	Nebraska City
Chris Callihan	Workforce	IBEW Local 265	Lincoln
Cory Weidner – Goehring	Business	Bosselman Companies	Grand Island
Denise Pfeifer	Business	UTC Aerospace Systems	York
Elaine Anderson	Government, Economic & Community Development	Nebraska Department of Vocational Rehabilitation	Kearney
Gary Kelly	Workforce	Thompson Specialty Services	Omaha
Greta Kickland	Business	Cameco Crow Butte Resources	Crawford
Ann Chambers	Education	Central Community College	Grand Island
Karen Severson	Education	Northeast Community College	Norfolk
Wayne Brozek	Business	21 <sup>st</sup> Century Equipment	Scottsbluff
Michelle Engel	Business	Westin Packaged meats	Fairbury
Kelsey Miller	Government, Economic & Community Development	Nebraska Department of Labor	North Platte
Peggy Sandall – Bertrand	Business	Advanced Services, Inc.	Columbus
Roy Lamb II	Workforce	IBEW Local 265	Lincoln
Stacey Weaver	Business	Chief Agri-Industrial	Kearney
Cristina Thaut	Workforce	Indian Center, Inc.	Lincoln